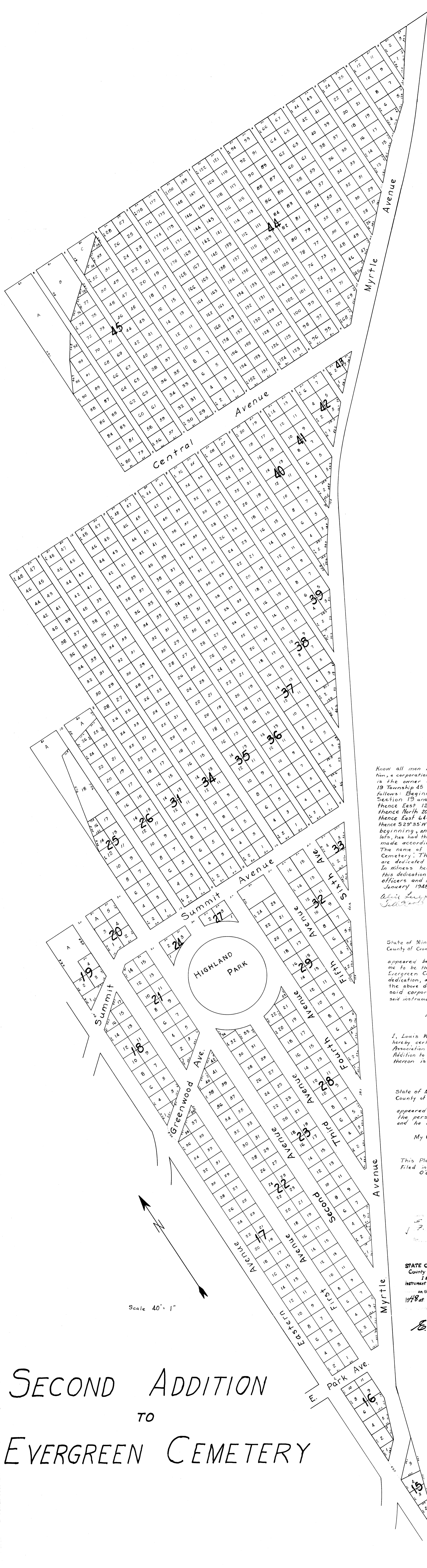


160



SECOND ADDITION
TO
EVERGREEN CEMETERY

Know all men by these presents: That the Evergreen Cemetery Association, a corporation organized under the Laws of the State of Minnesota, is the owner of that part of the West 1/2 of NW 1/4 of Section 19 Township 45 Range 30 in Crow Wing County, Minnesota, described as follows: Beginning at the 1/4 corner on the Range Line between Section 19 and 24; thence North on the Range Line 920 feet; thence East 120 feet; thence North 220 feet; thence East 100 feet; thence North 200 feet; thence East 196 feet; thence North 310 feet; thence East 648.1 feet; thence S40°20'W 168 feet; thence S46°20'W 431 feet; thence S29°35'W 1184.0 feet; thence S17°10'W 204 feet to the place of beginning, and being desirous of platting said land into Cemetery lots, has had the same surveyed and the annexed Plat thereof, made according to the Statutes in such cases, made and provided. The name of this Plat shall be "Second Addition to Evergreen Cemetery." The streets and avenues and alleys shown thereon are dedicated to the public use. In witness hereof the Evergreen Cemetery Association has caused this dedication to be executed by its properly authorized officers and its corporate seal attached this 22nd day of January 1948.

Alvin Luepker
Secretary
The Evergreen Cemetery Association
By *[Signature]*
President
Witnesses *[Signature]* Secretary

State of Minnesota } ss.
County of Crow Wing }
On this 22nd day of January, 1948, personally appeared before me *Wm. Graham* and *C. Bruhn*, well known by me to be the president and secretary respectively of the Evergreen Cemetery Association, the corporation named in the above dedication, and each being duly sworn by me did sign and seal the above dedication by authority of the Board of Directors of said corporation, and said *Wm. Graham* and *C. Bruhn* acknowledge said instrument to be the free act and deed of said corporation.
Alvin Luepker
My Commission expires 10-31-52 Notary Public
Crow Wing County, Minnesota

I, *Louis Knudsen*, Registered Engineer and Land Surveyor #940 do hereby certify that I have at the direction of the Evergreen Cemetery Association made the above mentioned survey and plat of the Second Addition to Evergreen Cemetery and that all information shown thereon is correct to the best of my knowledge and belief.
Louis Knudsen
Registered Land Surveyor #940

State of Minnesota } ss.
County of Crow Wing }
On this 22nd day of January, 1948, personally appeared before me *Louis Knudsen* well known by me to be the person described in and who made the above certificate, and he acknowledges the same to be his free act and deed.
Jacob Oestler
My Commission expires July 22-1948 Notary Public
Crow Wing County, Minnesota.

This Plat of Second Addition to Evergreen Cemetery was filed in my office this day of 1948 at O'clock .M.
Register of Deeds
Crow Wing County, Minnesota.

Exempt. Dated this 7th day of Feb. 1948
J. M. Hagberg
Notary Public
146658
STATE OF MINNESOTA } ss.
County of Crow Wing }
I hereby certify that the within instrument was filed in this office on the 10 day of Feb. A. D. 1948 at 9 o'clock A. M.
[Signature]
E. W. Jenkins
Register of Deeds.