

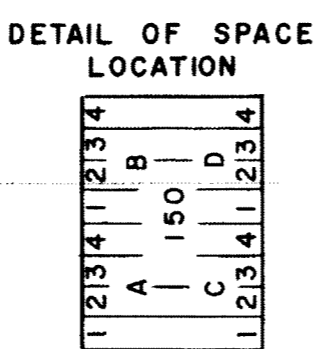
172422 STATE OF MINNESOTA }  
 County of Crow Wing } SS  
 I hereby certify that the within  
 instrument was filed in this office  
 on the 9<sup>th</sup> day of Oct A. D.  
 1954 at 9 o'clock P. M.  
*Ed. W. Jenkins*  
 Register of Deeds.

# AMENDED PLAT

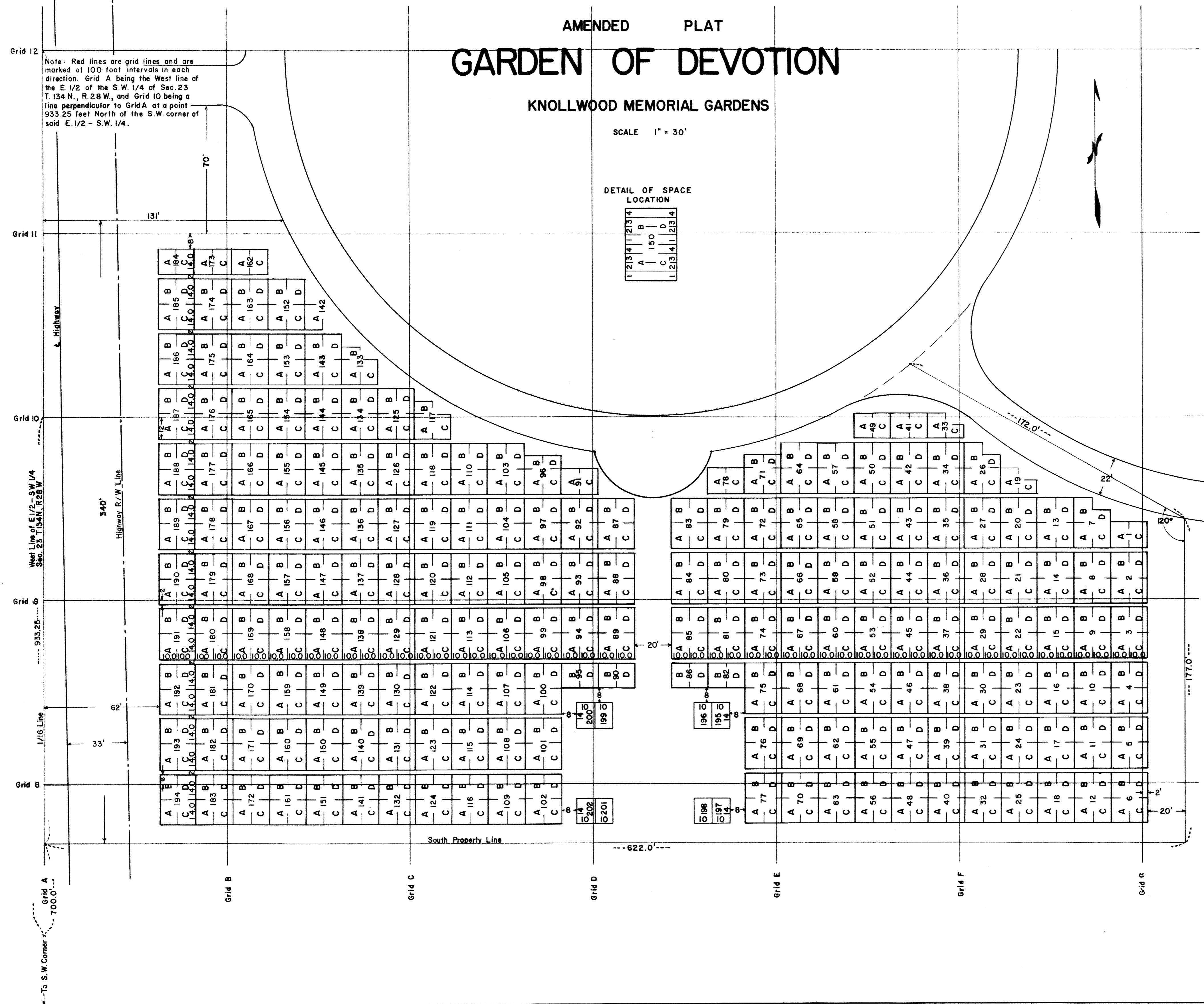
## GARDEN OF DEVOTION

### KNOLLWOOD MEMORIAL GARDENS

SCALE 1" = 30'



Note: Red lines are grid lines and are marked at 100 foot intervals in each direction. Grid A being the West line of the E 1/2 of the S.W. 1/4 of Sec. 23 T. 134 N., R. 28 W., and Grid 10 being a line perpendicular to Grid A at a point 933.25 feet North of the S.W. corner of said E. 1/2 - S.W. 1/4.



Know all men by these presents, that Crow Wing Memorial Gardens Association, a Minnesota corporation is the owner of that part of the East 1/2 of the S.W. 1/4 of Sec. 23 Twp. 134 N. R. 28 W described as follows: Beginning at a point on the westerly line of said subdivision which is 700 feet North of its Southwest corner; thence East 622 feet; thence North 177 feet; thence North 60°00' West 172 feet more or less to the outer edge of the circular street around the "GARDEN OF THE CHRISTUS"; thence counter clockwise along said street line to its intersection with a line 340 feet North of the place of beginning; thence West 131 feet more or less to the westerly line of said subdivision; thence South 340 feet along said West line to the place of beginning, and being desirous of platting said land into Cemetery lots, have caused the same to be surveyed and the annexed plat thereof, made according to the Statutes in such cases, made and provided. The name of this plat shall be "Amended Plat, Garden of Devotion, Knollwood Memorial Gardens." The walks and paths as shown on the plat are hereby dedicated to the Public. This amended plat of "Garden of Devotion" is made for the purpose of altering the size of lots platted in the original plat from 9 feet by 13 feet 4 inches to 10 feet by 14 feet, and to more advantageously place access walks through the cemetery. In witness whereof said Crow Wing Memorial Gardens Association has caused these presents to be signed by its proper officers and its corporate seal affixed hereunto this 1st day of September, 1954.

In the presence of:  
*Edward Callahan* Crow Wing Memorial Gardens Association  
 Allen T. Rorem President  
*Dorothy E. Nelson* Secretary

STATE OF MINNESOTA }  
 COUNTY OF CROW WING } SS  
 On this 9<sup>th</sup> day of September, 1954, before me, a Notary Public within and for said County, personally appeared Allen T. Rorem and Dorothy E. Nelson, to me personally known, who, being each by me duly sworn they did say that they are respectively the President and the Secretary of Crow Wing Memorial Gardens Association, and that the seal affixed to the above dedication is the corporate seal of said corporation, and that said dedication was signed and sealed in behalf of said corporation by authority of its Board of Directors and said Allen T. Rorem and Dorothy E. Nelson acknowledge said dedication to be the free act and deed of said corporation.

My Commission Expires May 20, 1957  
*Edward J. Callahan, Jr.*  
 Notary Public  
 County, Minnesota.  
 EDWARD J. CALLAHAN, JR.  
 Notary Public, Hennepin County, Minn.  
 My Commission Expires May 20, 1957.

I, Dean M. Anderson, Registered Land Surveyor No. 3091, do hereby certify that I have made the above mentioned survey and the annexed plat of the "Garden of Devotion". All information shown thereon is correct to the best of my knowledge and belief. There are no wet lands or Public Roads, other than shown on this plat, on this land.

*Dean M. Anderson*  
 Registered Land Surveyor

STATE OF MINNESOTA }  
 COUNTY OF CROW WING } SS  
 The above certificate was subscribed and sworn to before me, a Notary Public within and for said County this 16<sup>th</sup> day of August, 1954.

C. J. Kahl  
 My Commission Expires June 16, 1957  
*C. J. Kahl*  
 Notary Public  
 Crow Wing County, Minnesota.

I, L. E. Purdy, Treasurer for Crow Wing County, Minnesota, do hereby certify that the Taxes on the above described land have been paid for the year 1953.  
*L. E. Purdy*  
 Treasurer

I, F. M. Hagberg, Auditor for Crow Wing County, Minnesota, do hereby certify that the Taxes on the above described land have been paid for the years prior to 1953.  
 Dated: 29 Sept. 1954  
*F. M. Hagberg*  
 Auditor  
 By *Kallen A. Baughney*, Deputy